



**G2D Nodens
Technology™**

It is a unique, multi-stage technology involving the pulverisation of raw materials down to a few dozen microns (grind to dust), separation of active particles, mixing and aggregation. Each obtained granule features an intelligent disintegration activation system so that the product is characterised by the highest performance – complete solubility and gradual release of nutrients. Our technology provides almost double the power of the fertiliser!



**Product
characteristics**

MINERAL FERTILISER (PFC1 (C) (I) (a) (i))

K (Ca, Mg, Na, S) SIMPLE SOLID INORGANIC

MACROCOMPONENT FERTILISER 12(+19+5.5+6.5+42)

Contents: 12% K₂O, 19% CaO, 5.5% MgO, 6.5% Na₂O, 42% SO₃

Ingredients: CMC1: primary raw materials and mixtures: polyhalite, calcium carbonate

Granulometry: 98% of the product is in the form of granules measuring 2-5 mm

substance pH: 7.7

Precautions: use eye and face protection. In case of getting into the eyes, carefully rinse with water for several minutes. Keep away from children!

Storage: store away from sunlight, in a dry and well-ventilated room. In winter, protect against freezing and additionally cover with fleece.

GoudenKorrel®

Compound fertiliser manufacturer

The company **GoudenKorrel®** as a pioneer in the market of granulated fertilizers, offers top-quality products manufactured through the latest scientific and technological achievements. We produce fertilizers based on **polyhalite** – a unique mineral containing high concentrations of sulfur, potassium, magnesium, calcium, and sodium. Through collaboration between our outstanding scientists and experts from various fields, we continuously discover new properties of this unique raw material to fully exploit its potential.

www.GoudenKorrel.eu



CONTACT US

+48 607 777 111
contact@goudenkorrel.com

**Manufacturer:
GoudenKorrel S.A.**

Compound Fertilizers Production Plant
Kaliska, Fabryczna Street, 5
87-840 Lubień Kujawski, Poland



BELENUS®

**ECOLOGICAL MINERAL
FERTILISER**



GoudenKorrel®

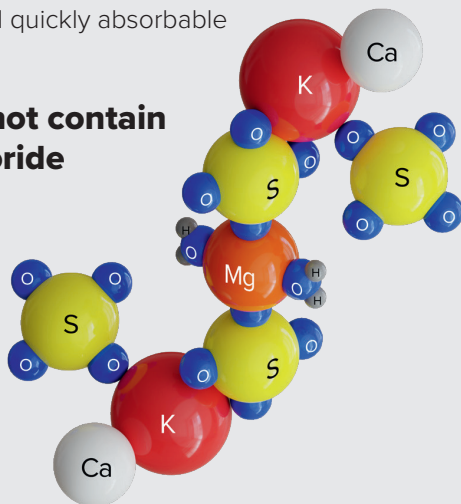
Belenus® is a natural mineral fertiliser and the optimal response to the problem of sulphur deficiency in the soil.

The fertiliser is intended for use on all soil types, including especially light soils prone to leaching. The high proportion of sulphur with the addition of potassium, calcium, magnesium and sodium comprehensively improves the welfare of the plant. The application of **Belenus®** fertiliser increases the quantity and quality of the crop by stimulating vegetative growth of the plants, boosting chlorophyll content, activating enzymes and the photosynthetic process. At the same time, **Belenus®** provides a real shield to protect plants from the effects of heavy metals and xenobiotics. **Belenus®** is particularly recommended for oilseeds, including rape, soya and sunflower, as well as for maize, cereals, vegetables and sugar beet.

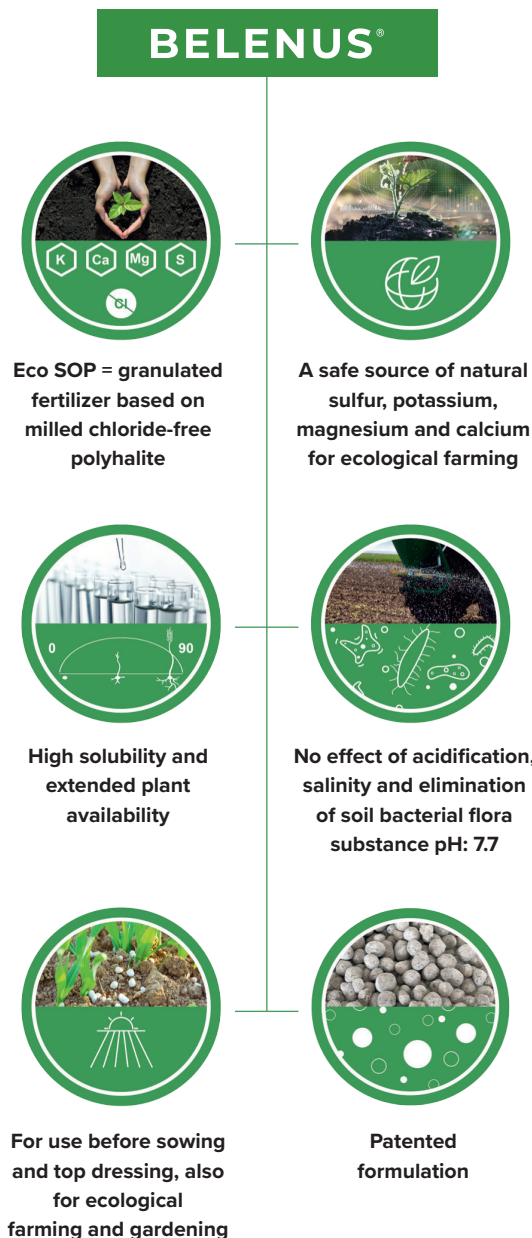
K₂O 12%	CaO 19%	MgO 5,5%	Na₂O 6,5%	SO₃ 42%
------------------------------	-------------------	--------------------	--------------------------------	------------------------------

Polyhalite is a natural mineral containing high concentrations of potassium, sulfur, magnesium, calcium, and sodium in the form of easily soluble and quickly absorbable sulfates.

It does not contain any chloride bonds!



6 reasons to choose



Application and application rate

The fertiliser for pre-sowing and post-sowing application; mixing into the soil recommended. For the selection of an appropriate dose, it is necessary to take into account the target yield, soil type and its physical and chemical characteristics. The below application rate table is indicative.



AGRICULTURAL CROPS

Plant	Fertiliser application rate (kg·ha ⁻¹)
Buckwheat	250
Cereal mixtures	250-300
Coffe	250
Cotton lint	200
Fiber flax	250
Fodder	500
Grassland (meadow)	200
Hops	300-500
Jerusalem artichoke	200-300
Maize	200-400
Millet	200
Oats	200-350
Peas	200-350
Potato	200
Rape	300-400
Rice	150
Rye	200-350
Sorghum	250
Soya	200-350
Soybean	200-350
Spring barley	200-350
Spring wheat	200-350
Sugar beet	300-500
Sugar cane	500-650
Sunflower	250-300
Sweet potatoes	350
Tabacco	550-650
Tea	200
Triticale	200-350
Winter barley	200-350
Winter wheat	200-350



VEGETABLES & FRUITS

Plant	Fertiliser application rate (kg·ha ⁻¹)
Apple	300
Banana	450
Beans (dry)	200
Beetroot	250
Broccoli	300-400
Brussels sprouts	300-400
Cabbage	300-400
Carrots	250
Cassava	200
CauliflowerChinese cabbage	300-400
Citrus fruit	300
Climbing beans	200
Cocoa Beans (dry)	250
Cucumber	300
Dwarf beans	200
Eggplant	350
Garlic	300-400
Green peas	250
Groundnuts (peanuts)	250
Horseradish	300-400
Kale	300-400
Kohlrabi	300-400
Leek	250-400
Mango	200
Melon	200
Onions	300-400
Palm oil	700
Peas	200
Peppers	250
Plantains	250
Radishes	300-400
Red cabbage	300-400
Savoy cabbage	300-400
Sesame seed	150
Small radishes	300-400
Turnip	300-400
Vine	450
Watermelon	200
White cabbage	300-400